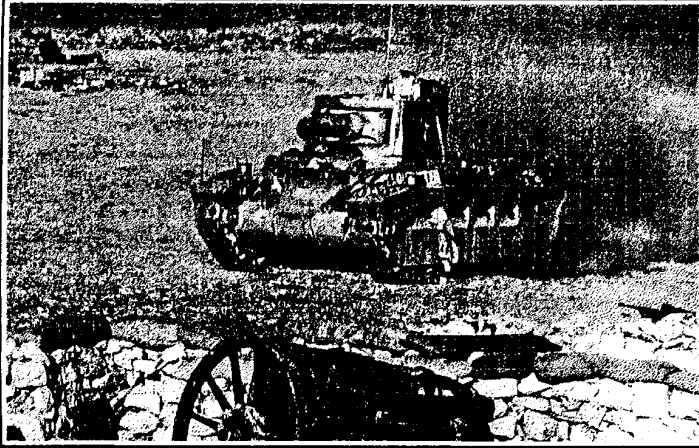


A DANCE WITH THE QUEEN

SCENARIO ASL TAC11 Translated by Coastal Fortress Gaming Group



VICTORY CONDITIONS: The British win immediately upon controlling all of the trenches, provided they have not lost > 30 DVP.

NIBEIWA CAMP, SOUTH OF SIDI BARANI, EGYPT, December 9, 1940:

In order to drive the Italians out of Cyrenaica, the British organized operation "Compass" to retake the town of Sidi Barani, lost two months earlier. Outnumbered, General O'Connor, head of the Desert Western Forces, wanted to circumvent the city to the south so as to disrupt its supplies. The shortest hook was entrusted to the 4th Indian division and to the 7th Royal Tank Regiment, equipped with 44 Matilda IIs. These units would have to destroy three fortified camps along the road, of which the most significant, Nibeiwa, was first. This camp, an oval of 2000m by 1800m behind a network of barbed wire, was occupied by more than 2000 Italians and Lybians. At 0700 hrs, surprising the camp, the British artillery opened the ball and the tanks of 7th RTR's shook for a small dance.

BOARD PLACEMENT:

27	26
D1	D2

BALANCE:

⊙ British OBAis 88mm

III Replace a M11/39 with a M13/40



III ITALIAN sets up first	⊙	1	2	3	4	5	6	7	8	9	END
⊙ BRITISH moves first [160]											



Elements of "Gruppo Maletti" [ELR: 2]

set up on/south of hexrow Lon board 27, in hexes numbered 4 {SAN: 4}:

3-4-6	9-2	8-0	7-0	2-10	1-5	2-5	2-10
15				2	3	3	



2-2-7	24	20	12	8	2	2	2	2
4								

Elements of 2nd Queen's Own Cameron Highlanders, 11th Indian Infantry Brigade (4th Indian Division) and

armoured 7th Royal Regiment Tank. [ELR: 3]

enter on turn 1 on/between 27A1 and 27J10 {SAN:2}:

4-2-7	9-1	8-0	8-0	2-10	2-2	1-12	2-10	2-10	2-10
16		2			4	4	4	2	

Scenario Design: Robin Reeve & Théophile Monnier '92

SSR:

- EC are dry. There is a mild breeze from the Northwest.
- The British have a 80mm OBA with an offboard observer, secretly placed before Italian setup at level 1 on the western edge of board 27.
- Place the following overlays: D1: 27X5-X4 and D2: 26I9-I8. Rule F.4 applies.
- The 75*s must be placed in trenches, the 20Ls must be placed in sangars. Bore-sighting is prohibited. There must be at least two trenches placed north of hexrow V exclusive.
- The DVPof Matilda is 6. APmines cannot be exchanged for ATmines.

AFTERMATH: Thirty-five minutes after the beginning of the attack, the British tanks penetrated the camp without infantry support. It was a wave of Matildas that then caused an indescribable disorder. The Italians reacted with all available weapons: machine-guns, high-explosive shells, 37mm guns, grenades, rifles. A cloud of projectiles surrounded each tank as they traversed the camp in all directions, moving and firing. Only the valorous 75mm gun crews kept their positions, immobilizing about half of the British tanks. But soon they were all crushed or buried alive. General Maletti was mowed down by a burst of machine-gun fire as he came out of his tent, light machine-gun in hand, and his son behind him was seriously wounded. After one hour of this attack, the entire camp surrendered to the coming infantry. The Matilda became "Queen of the Battlefield". In 6 months, a much more frightening king took the throne: the 88 of Rommel.